



SVGRS Newsletter February 2018

2018 Calendar of Events

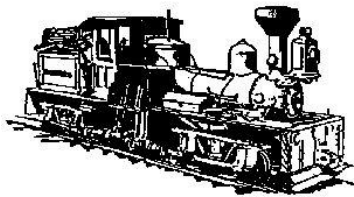
Jan-31	5:30pm - Executive Board Meeting (new year planning schedule)
Feb- 15	First Quarter Newsletter
Mar-13	7:00pm - General Meeting #1 New Oxford Train Station
Mar- 18	3:00 Repack and Organize trailer for ECSLTS train show. Bob Segessenmans home
Mar-29	9:00am - Setup for Spring ECLSTS
Mar-30	9:00am - ECLSTS Train Show Day 1
Mar-31	9:00am - ECLSTS Train Show Day 2 Tear Down @ 4:00pm
Mar-31	Deadline to pay 2018 Dues (Post or deliver to Jeff Shubert)
Apr-15	Deadline for 2nd quarter News Letter Articles
June TBA	Open House TBA Short meeting to be held as well
Sep-15	1:00am - General Meeting #3/Club Picnic (Jeff & Mel Shubert's House in Shippensburg PA)
Sept 29	1:00pm Trailer Inventory, Clean inventory items and repack for RR
Oct-15	Deadline for 4th quarter News Letter Articles
Nov-2	9:00am - Rocky Ridge Pre-Setup up ; Track & Platforms (Rocky Ridge County Park, York PA)
Nov-10	9:00am - Rocky Ridge Complete Setup (Continued)

Nov-23 6:00pm - Christmas Magic Opening Day

Dec-2 5:00pm - General Meeting #4/Christmas Party
 (Hanover Railside Dinner) – Hanover PA)

Dec-31 2017 Rocky Ridge Christmas Magic Ends

Reminder: 2018 Club dues are to be paid by the end of March. Dues are paid to Jeff Shubert, 258 Chestnut Drive, Shippensburg, PA 17257-9493



Message from the Club President

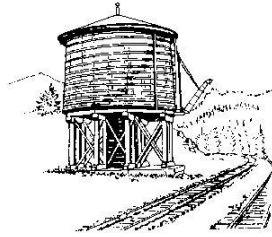
Another year has passed like so many of us, we make promises to build, add or keep our garden railroad running nicely. To some this takes a few days to get the RR in order, while others need weeks to get their projects done. I am guilty of this to some extent; since my layout remains unfinished Health issues and a ridiculous work schedule have kept me from finishing. Still, it's not a complete excuse. I, like a lot of us have more trains then we can play with it and collecting is more fun.

Some of us put in hard work and time to keep the trains running, so others can now enjoy. This seems to be the new trend. We are all labored with time constraints that seem get in our way from enjoying any hobby.

Renee and I have started traveling in the past 5 years and have seen it go both ways. Some Railroads are downsizing or folks have just retired out and quit. Then there are some Layouts being built. This is good news. I just feel lucky that myself as well as others in our club were able to particulate and grow with the hobby in good ole days when large scale just kept growing and growing. Shows have come and gone as well. From state to state is different. In the New England states, G scale is still going strong and new modelers are joining clubs all the time. While Pennsylvania has seen a decline.

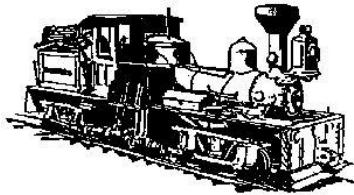
I hope this year we can all take "a little time" and be a kid again. Enjoy what we have and invite others to come see and play with our trains. After all it's just a big toy.

Turk Russell



2018 Layout Tours – Volunteers Needed

If you have a garden Railroad layout we would appreciate if you would consider having a open house in 2018. This is a good way for members to get ideas and also provides good comradery among our members. If interested contact Joe Mower to set up a date. Sunday afternoons seem to work best for most members.



2017 Rocky Ridge Christmas Roundup

This year's display was built in 2 stages to alleviate some of our past problems. Each year we are getting a little bit better at it considering the logistics. A few of us went to the park on Nov 3rd to do a pre-setup of the platforms and trestles and to get things organized before the main setup. On Nov 11th, 24 volunteers braved the cold and completed 90% of the display. It was the longest setup day (9:30-4:15) since we starting doing Rocky Ridge. Phillip Shoop and myself finished the display on Nov 21 so the entire layout was in working order. **Thanks to The McNews and Rieffes provided drinks and comfort food!**

This year's weather had been so mild, but of course it had to turn cold the weekend of setup. Jason Scott brought his new super heater, which provided a much improved and comfortable temperature to work in. (Continued)

The building was warm within an hour. Now that we have the building insulated; building the display is not so bad. . (continued)

Our sponsor again, was Steam into History offering us \$1500.00. After years of negotiating with the Park to upgrade the income; I was happy to say that I finally received the well-deserved /additional \$1000.00 payment)

Depending when Thanksgiving falls on the calendar year; this was the longest stretch of days for the Park to be open in years. Scheduled for 38 days to be open ; we ended up with 34; due to 4 days of “weather closings” and one night of an early closing. The park closed on 2 important Saturdays that are sometimes the biggest draws. Rob & I were there on the Saturday before Christmas (Dec 16), which turned out to be the biggest night in many years. This is the second year in a row the park closed on big nights. Most of feel the Saturday before (9th), they should have opened. With a light snow, I was told that the park looked gorgeous.

While we did very well this year, I would love to see how the attendance/finances would turn out if we were open all 3 of those weekends or at least 2. It’s still long time to run trains and we are grateful the awesome success the club was able to obtain.

We ran 7 trains again this year with some minor changes to the display. Thomas and friends was incorporated into the Gingerbread village with lots of figures, done by the Adams family. Bob Wenger (our VP) built us a new replacement pre-built Thomas track loop . The new loop has 5ft curves and breaks down into 2 sections. The trains run better with less wear and no sequel noises now that the track has been upgraded from the old 4ft curve.

This was much needed since the old dog bone loop has seen better days. Other than the usual issues, all things ran good for the first 2 ½ weeks . Turk extended the trestle loop this year so The “Olaph the snowman train” was now visible from both sides of our Water feature. The kids loved it

We did experience some amusement ride issues. 3 ½ weeks into the calendar, the roller coaster broke. This was not the usual “Turk fix” in a day. The drag chain motor burned up and fell out of its brackets. After 4 years of running we cannot complain. It took me a week to get a replacement motor though. Phillip S did the repairs for us to get it back up and running. (Thanks . We also had some little kids climb in both the outside and inside display. They did some damage but not bad. Our LGB mogul had to be repaired. We received some super nice reviews on the overall layout and the trains ran pretty much trouble free.

Kambach Publishing provided 2 cases of literature, but that was it. Due to cut-backs in our hobby; tickets, drawing boxes and free magazines are no longer offered. They also no longer participate in the raffle. (continued)

Special Thanks to Jeff Shubert for printing and providing over 600 of the 1071 tickets sold.

Our Raffle ticket sales for Thomas Tank train set were a record this year. Most Tickets ever sold at a SVGRS event.(1071) Thanks to Bachmann trains for providing us “no cost” a new Large scale train set .

The winner of the Thomas the tank train set was Michele Hess of Dover Pa. She wanted the set for her granddaughter.

The final report will come later, but here are the highlights

Total Attendance: 44,615 New record !

Highest Donations: \$133.79 (Dec 16) Russells & Segessenmans

Lowest Donations : \$10.00 (Dec 31) Way up from the past

Most Raffle Tickets Sold: 100 (Dec 8) Derry Stewart & Walter Plank

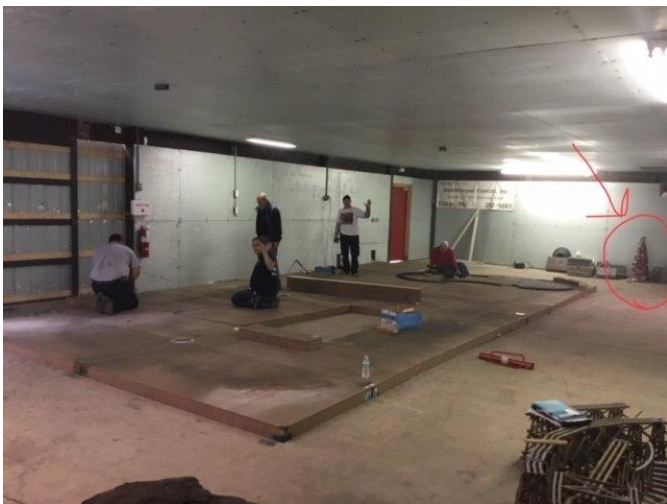
Best Attendance Nights: 3591 (Dec 16) Russells & Segessenmans

Coldest Nights: 14 degrees (Dec 31) McNews

We (Myself & Rob) would like to thank “everyone” for the donation of their time and effort to build /fix / monitor this year’s display . This is our only fundraiser and it keeps our club alive.

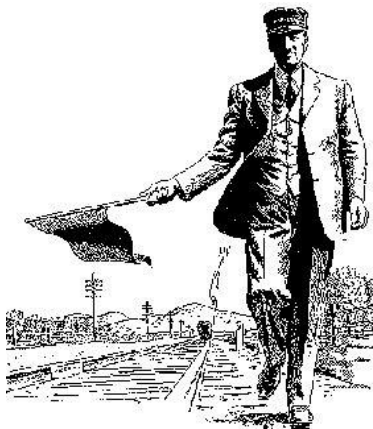
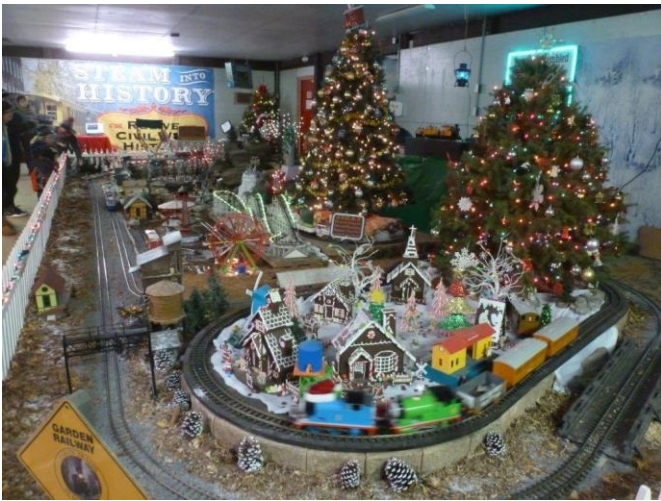
Turk Russell Chairman/ Coordinator

Rob Segessenman Asst. Coordinator









Like a lot of us, we all attend a few train shows each year. Even if we know they are not much or as good as the likes of the ECLSTS, we tend to go hoping make a rare find or something different. This year I was afforded the opportunity to go to what is billed as the largest model train show on the East coast. This show is held every year at the end of January. Snow, sleet or bad storms in Massachusetts, near the NH boarder do not stop this show from happening. Its only 2 days long, but I can tell you that its” Huge”. Held at the Eastern States Exposition Center, better known as “The Big E”. Every Scale of trains including some Real size trains were on display. The fairgrounds are over 2 times the size of the entire York fairgrounds. So I flew up for the weekend with my friend Rob Segessenman to check it out.

I have been friends with some of the New Hampshire Garden RR society members and they tell me it’s a must see to show to believe. Member Kevin Rydzewski (NHGRS) and I have been good buddies and even though he is a diesel lover; we put up with each other very well and when it comes to our Large scale trains we can talk for hours. He was our mini tour guide and we were thankful to have him; plus the use the clubs layout as a home base. It also gave us a place to store our purchases and take a break and sit and talk with fellow G scalers.

Kevin gave us the low down early on the show mapping of where all the deals and best booths to see were. This was a huge help for Rob and I since its in 4 buildings and a lot of walking. It was good to see some familiar faces as well as our previous member Don Sweet. (RCS controls of new England)

The first thing you see is how organized the show is. Canopies to walk under between every building to keep you dry. Folks at every door with helpful advice or booklets. Big screen TVs with listings of all the works shops and tech seminars. Nice places to eat there as well.

Then there is the layouts; and there are plenty of them. Modelers, train lovers and just tourists would be amazed, be it any age. Whether it be N or HO or G scale; we viewed some that were 75 x 50 ft and even 100 ft. HUGE is the word to describe them. 75-100 car trains were the norm.

It was amazing! The next thing we noticed was how many young families and kids. Lots of babies to teenagers were at the show. Some booths like the Bachmann and HO-High Railers were jammed packed with kids and their parents.

You don't see that at shows down our way anymore. Cell phones were out for photos not texting. It made me happy to see that the model train hobby still has the potential for future growth.

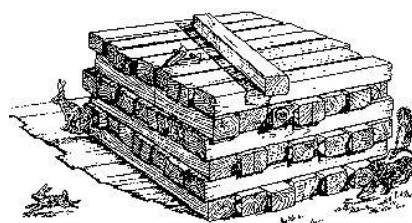
Then there were the 1ft scale guys. Diesels, and I mean big diesels with 18 hp Honda engines in them. We saw a brand new custom built Camelback loco that was just completed. It only costs 30k to buy!!

Last, the folks from Maine (Booth Bay Village RR) brought down a life size 1925 Porter engine that had been converted into a 0-4-4 Forney locomotive. They drove the loco off the truck/ trailer onto hand laid track and ties in the parking lot.

Big kids to little kids and all ages including myself had to see it and get inside the cab. It only took about a 5 min wait and you know me and Steam; I was in the cab singing a song with that 150 DB whistles. It was cool to say the least!.

When Sunday evening rolled around and the show was ready to close, at 5pm ; another rare site. The place is still packed with people everywhere. They announced that 17,455 people attend the show from Sat-Sun. Rob and I got our hands dirty and wanted to see how the New Hampshire group does a tear down. I had only dealt with modules around 18 years ago .Yes our club did have one. Loading trailers with 4ft x 2 ft platforms is definitely better than what we have to go through, and less messy. It was definitely easier, but then you have all that storage to deal with. Needless to say, by 6:20pm we out the door with trailers in tow. From antiques and books to every kind of LED lighting, Legos and trains you can imagine This show affords something for the train nut in all of us.





2017 Christmas Party

For the third year in a row, our club once again gathered at the Hanover Railside Dinner for our annual Christmas Party on Sunday Dec 3rd. This has become a well-liked venue as the location is central to our area. The food is good and we have the place to ourselves. This year saw a new benefit for our members in that because of the club's good fortune at Rocky Ridge, all costs for both the Christmas party and summer picnic were covered by the treasury. The party was hosted by Turk Russell and Penny Segessenman with fresh jokes and new videos to share. The festivities were well attended with 44 of the 50 folks who RSVP'd joining us for the celebration and camaraderie of our train club. We do like to talk and we do like to eat!

The meal was kicked off at 5:00pm after Barry McNew provided our blessing. Renee Russell coordinated the 50/50 and Derry Stewart was our winner. The club provided quite a number of raffle prizes which were drawn throughout the evening by Turk and Penny with the Grand prize(LGB 2-6-2 loco) won by Phillip Shoop's mother who accompanied him and his son Ryan to the party.

Our club President ran a short business meeting which provided some insights on the year we'd had and especially how Rocky Ridge has become the life blood of our club. Tresurer Jeff Shubert gave us a healthy financial report and Secretary Rob Segessenman read off minutes and discussed some previous issues.

This year's video entertainment was provided by Turk Russell through special permission from the Editor of Raifan magazine This showcased beautiful photos of both domestic and foreign trains with narratives spanning 10 years of Railroad photography.

Special thanks to Walter and Pat for giving everyone a parting Christmas gift that included train themed ornaments.

Thanks to Penny & Rob Segessenman, along with Renee and Turk Russell, for once again making this a fun and enjoyable evening for all.

-RFSJr.



PIKO TRAINS

The new catalog is promising a small diesel locomotive that will be a battery powered track cleaning loco . From what I have been told it will have some sort of abrasive material that will mount between the wheels and clean track . I don't think this is going to replace the true and trusted LGB version but then the costs should be less



Rail Pro engineering is now offering a wonderful hi-tech system that has what some would consider the best remote control ever . Their system can be operated by DCC or battery control . The remote is finally a mini computer with easy to program and screen icons for operation.

What sets this system apart from others is cost and that their boards come with sound included. This is unheard of in the large scale community. I had a chance to operate one and they are very nice with great range. 60ft. You can read more at the following site.

<http://www.ringengineering.com/RailPro.htm>

SVGRS Club Officers

President – – Turk Russell (717) 762-8873, turkruss@gmail.com

Vice

President Robert Wenger, weng308@yahoo.com

SVGRS Secretary - Rob Segessenman 717-359-8515, rob@robtronics.com

Treasurer – Jeff Shubert (717) 530-0561 shube@comcast.net

Newsletter Editor – Joe Mower (717)-241-6483, jhmower@aol.com

Layout Coordinator – Position Open